



MetConnect

Accessories Datasheet

Professional Weather Station

Easy to use, configurable multi-parameter weather stations

MetConnect weather stations are supported by a range of accessories. These accessories can be used to connect, install and maintain MetConnect. The accessories have been designed, or selected, to ensure the long term performance of MetConnect products.

ACCESSORIES	
Connector, M12, 8 way, field wireable	1733-PK-002
Cable, 4 pair for power & communications cable, supplied per metre	1733-PK-010
Cable, power & communications cable, 2m with fitted M12 connector at MetConnect end	1733-PK-011
Cable, power & communications cable, 10m with fitted M12 connector at MetConnect end	1733-PK-013
Cable, power & communications cable, 20m with fitted M12 connector at MetConnect end	1733-PK-014
Bracket mounting kit, replacement for re-mounting MetConnect	1733-PK-022
Adaptor, M12 to USB for configuring MetConnect	1733-PK-030
Sensor, replacement pressure sensor	1733-PK-040
Sensor, replacement temperature & humidity sensor	1733-PK-041
MetSet Software* to configure MetConnect MetView Software*, to view reported parameters	* download from Gill Instruments website



Accessory Descriptions

- **M12 Field Wireable Connector (1733-PK-002)**

The M12 connector has 8 pins, is field wireable (screw terminal). It is compatible with the connectors used on MetConnect for power and communications and for additional sensors.



- **Power & Communications Cables**

The 4 pair cable can be used to connect MetConnect to power and communications, and to additional sensors.

The cable can be supplied in standard lengths with a single 8 pin M12 connector fitted so it can be cut to the correct length and an appropriate connector fitted. The following options are available

- 2m cable wired with one M12 connector (1733-PK-011)
- 10m cable wired with one M12 connector (1733-PK-013)
- 20m cable wired with one M12 connector (1733-PK-014)



In addition 4 pair cable is available by the metre (1733-PK-010) for use with appropriate connectors.



MetConnect

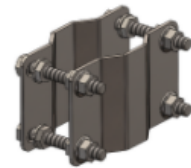
Professional Weather Station

Accessories Datasheet

Easy to use, configurable multi-parameter weather stations

- Replacement Bracket Mounting Kit (1733-PK-022)**

These plates, bolts and nuts are replacements for the plates supplied with MetConnect. They are used to secure and protect the MetConnect bracket when mounted to a pole.



- M12 to USB Adaptor (1733-PK-030)**

The M12 to USB adaptor allows a micro-USB cable to be connected to MetConnect for set-up. The adaptor allows power and data to be supplied to MetConnect units. By using Gill's MetSet software (which can be downloaded from gillinstruments.com) the MetConnect set-up can be updated as required. NOTE: This adaptor should not be used to connect to MetConnect in normal operation.



- Replacement Pressure Sensor (1733-PK-040)**

The replacement pressure sensor fits onto the MetConnect hub box using an M12 mounting. The sensor is a direct replacement for the sensor supplied with MetConnect.



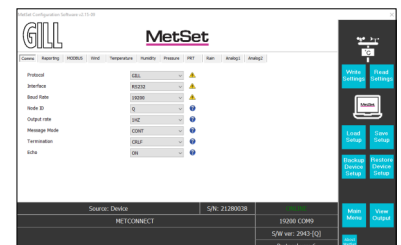
- Replacement Temperature and Humidity Sensor (1733-PK-041)**

The replacement temperature and humidity sensor consists of a measurement sensor with integrated cable and M12 connector. The sensor is a direct replacement for the sensor supplied with MetConnect.



- MetSet software**

MetSet is a Windows compatible software package that can be used to change the set-up of a MetConnect unit. MetSet is free to use and can be downloaded from gillinstruments.com.



- MetView software**

MetView is a Windows compatible software package that can be used to view and log the measurement data provided by MetConnect. MetView is free to use and can be downloaded from gillinstruments.com.

