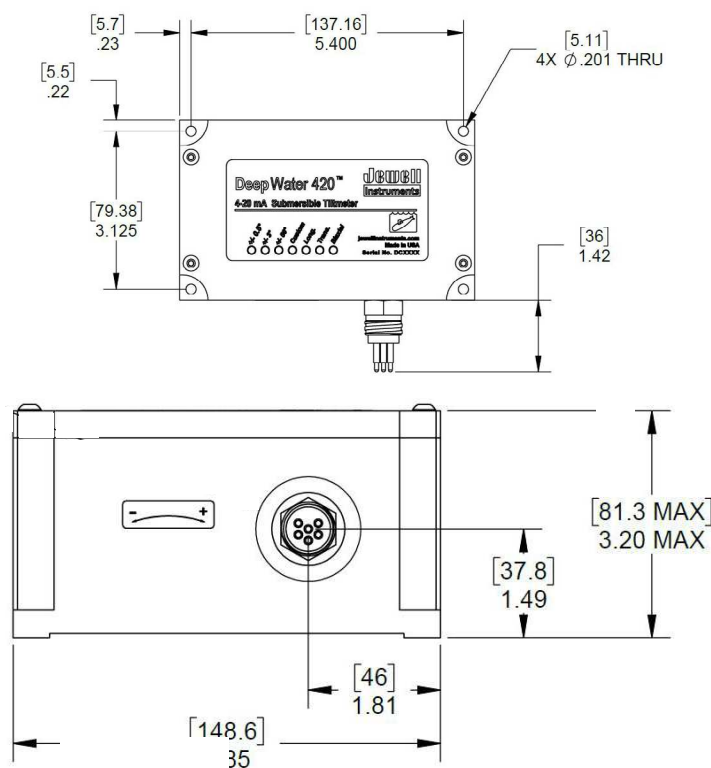


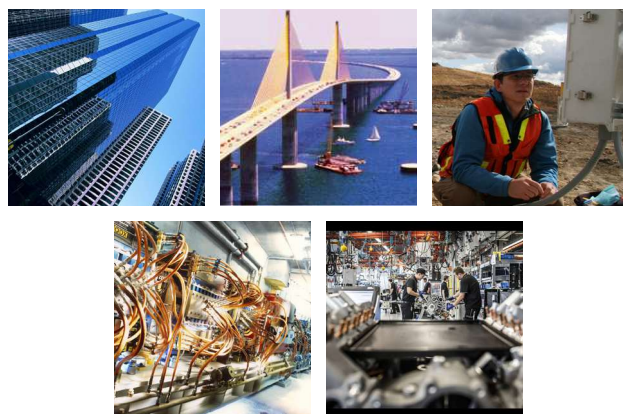
Model C802

DeepWater Analog Tiltmeter

The model C802 Deepwater is a high-precision submersible tiltmeter for use in marine, offshore, and deep ocean applications with 4-20mA output. Using an absolute gravity referenced electrolytic sensor, the C802 delivers superior measurement accuracy with nearly no long-term drift. High-gain units are sensitive to <0.0017 mm/m or better. All units are rated to +2500m waterproof for advanced protection from the elements. Use the C802 "DeepWater" for structural monitoring, angle measurement and control, platform leveling, and more.

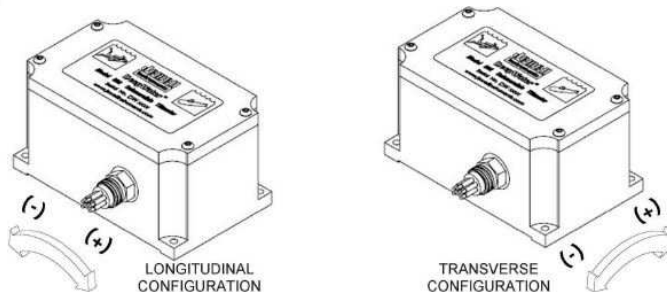


Dimensions: in [mm]



APPLICATIONS:

- Structural Monitoring
- Platform Leveling
- Industrial Measurement & Control



TILTMETER MOUNTING HOLES ARE $\phi .201$ [5.1]
(CLEARANCE HOLE FOR A #10 OR M4 SCREW)
(USE A #25 DRILL BIT TO TAP 10-32 OR 10-24)
(4 PLACES)

PERFORMANCE SPECIFICATIONS

PERFORMANCE

| | | | |
|--|---|-----------|-----------------------|
| ANGULAR RANGE (°) ¹ | ±0.5° | ±3° | ±50° |
| RESOLUTION | <0.0001° | 0.0006° | 0.01° |
| NONREPEATABILITY (° max) | <0.0002° | 0.001° | 0.02° |
| NONLINEARITY (%FRO) ² max | 1% | 2% | 0.5% |
| SCALE FACTOR | 0.0625°/mA | 0.375°/mA | 6.25°/mA |
| TIME CONSTANT | 0.15 sec | | |
| K _z TEMP COEFFICIENT (°/°C) | ±0.0002 °/°C (typical) | | ±0.002 °/°C (typical) |
| K _s TEMP COEFFICIENT (%/°C) | <0.04%/°C (typical) | | <0.1%/°C (typical) |
| OUTPUT | 4-20mA Two-wire current loop (per axis) | | |
| CHANNELS | Tilt, Temperature | | |

ELECTRICAL & ENVIRONMENTAL

| | |
|----------------------------------|--|
| NUMBER OF AXES | 1 or 2 |
| OUTPUT IMPEDANCE (Ohms, nominal) | 270 |
| TEMPERATURE OUTPUT | 0.1°C/mV typical (single ended; 0°C = 0mV) |
| POWER | (0.02 Ampere x R + 10 VDC) < Vs < 29 VDC |
| OPERATING TEMPERATURE RANGE | -4° to +60°C |
| STORAGE TEMPERATURE RANGE | -40° to +85°C |
| WEIGHT | 5 kg (11 lb.) |
| MATERIALS | 316 SS (6AL-4V Titanium also available) |
| SEAL | IP68 |
| CABLE | 6-conductors, Neoprene, 20 AWG, no shield |

PIN OUT:

| WIRE COLOR | PIN | FUNCTION |
|------------|-----|-------------|
| BLACK | 1 | GND |
| WHITE | 2 | TEMP RETURN |
| RED | 3 | V SUPPLY |
| GREEN | 4 | N/A |
| YELLOW | 5 | TEMP OUT |
| BLUE | 6 | TEMP EX. |

NOTES:

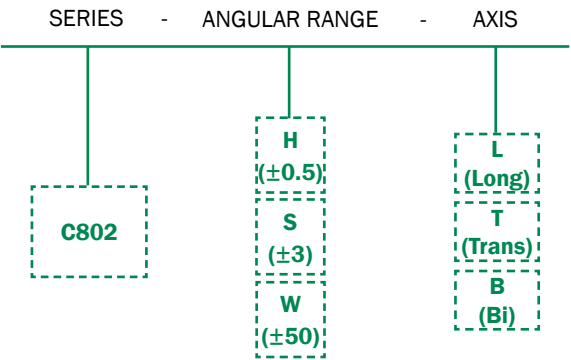
1. Custom ranges available on request
2. Nonlinearity is specified as variation around the best straight line from null to full-range output.

Specifications are subject to change without notice due to continued product development



ORDERING INFORMATION

HOW TO ORDER Model Numbers are comprised of the series, the angular range, and the axis configuration.



| | MODEL # | PART # |
|------|---------|----------------|
| ±0.5 | C802-HL | 98043-08-ROHS |
| | C802-HT | 98043-07-ROHS |
| | C802-HB | 98043-09-ROHS |
| ±3 | C802-SL | 98043-03-ROHS |
| | C802-ST | 98043-01-ROHS |
| | C802-SB | 98043-05-RO HS |
| ±50 | C802-WL | 98043-04-ROHS |
| | C802-WT | 98043-02-ROHS |
| | C802-WB | 98043-06-ROHS |

Accessories:

| PART # | DESCRIPTION |
|-----------|--|
| 00389 | Extra 8-socket Female in-line connector, Neoprene, on 24-inch (60 cm) Cable Whip (bare wire leads) |
| 00359 | Extra Delrin Locking Sleeve (locks 00358 and 00389 in-line connector to Male bulkhead) |
| 00358-xxx | Extra 6-socket Female in-line connector, Neoprene, (bare wire leads) price per foot |