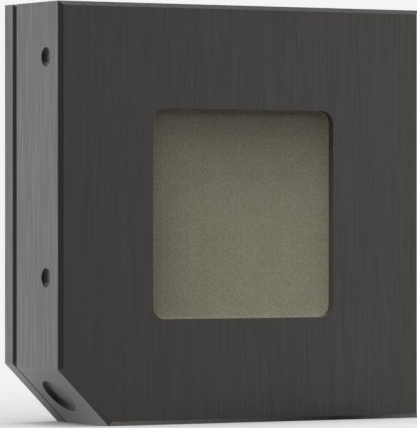


## QE25LP-S-MB-D0

Pyroelectric detector for laser energy measurement up to 3.8 J.



### PRODUCT FAMILY KEY FEATURES

#### MODULAR CONCEPT

Increase the power capability of your detector: 2 different cooling modules

#### LOW NOISE LEVEL

2  $\mu$ J for the MB coating

#### QED ATTENUATOR AVAILABLE

Measure up to 5X higher energies. Available with optional calibration, all wavelengths between 532 & 1064 nm, or single wavelength. [Read more.](#)

#### HIGH REPETITION RATE OPTIONS

- QE25HR-MB: 1 000 Hz
- QE25HR-MT: 10 000 Hz

#### TEST TARGET INCLUDED

With the MB models

#### SMART INTERFACE

Containing all the calibration data

#### COMPATIBLE STAND

[STAND-D-233](#)

## SPECIFICATIONS

### MEASUREMENT CAPABILITIES

Spectral range <sup>1</sup>	0.193 - 20 $\mu$ m
Typical rise time	550 $\mu$ s
Repeatability	<0.5%
Maximum repetition frequency <sup>2</sup>	300 Hz
Maximum measurable energy <sup>3</sup>	3.8 J
Noise equivalent energy <sup>4</sup>	4 $\mu$ J
Maximum pulse width	400 $\mu$ s
Energy calibration uncertainty	$\pm$ 3 %

1. For the calibrated spectral range, see the user manual.
2. May be limited by the display or PC interface. Please refer to the corresponding user manual.
3. At 1064 nm, 7 ns, 10 Hz. Increasing pulse width increases maximum measurable energy.
4. Nominal value. Actual value depends on electrical noise in the measurement system.

### DAMAGE THRESHOLDS

Maximum average power density <sup>1</sup>	10 W/cm <sup>2</sup>
Maximum energy density <sup>2</sup>	0.6 J/cm <sup>2</sup>
Maximum power	5 W

1. May vary with wavelength and average power.
2. At 1064 nm, 7 ns, 10 Hz. May vary with wavelength and pulse width.

### PHYSICAL CHARACTERISTICS

Cooling	Convection
Aperture width	25 mm
Aperture height	25 mm
Absorber	MB
Dimensions	50H x 50W x 14D mm
Weight	0.12 kg

## ORDERING INFORMATION

QE25LP-S-MB-D0	200455
QE25LP-S-MB-INT-D0	202381
QE25LP-S-MB-IDR-D0	203267
QE25LP-S-MB-INE-D0	

Specifications are subject to change without notice. Refer to the user manual for complete specifications.

## INTERESTED IN THIS PRODUCT?

GET A QUOTE

Find your local sales representative at [gentec-eo.com/contact-us](http://gentec-eo.com/contact-us)