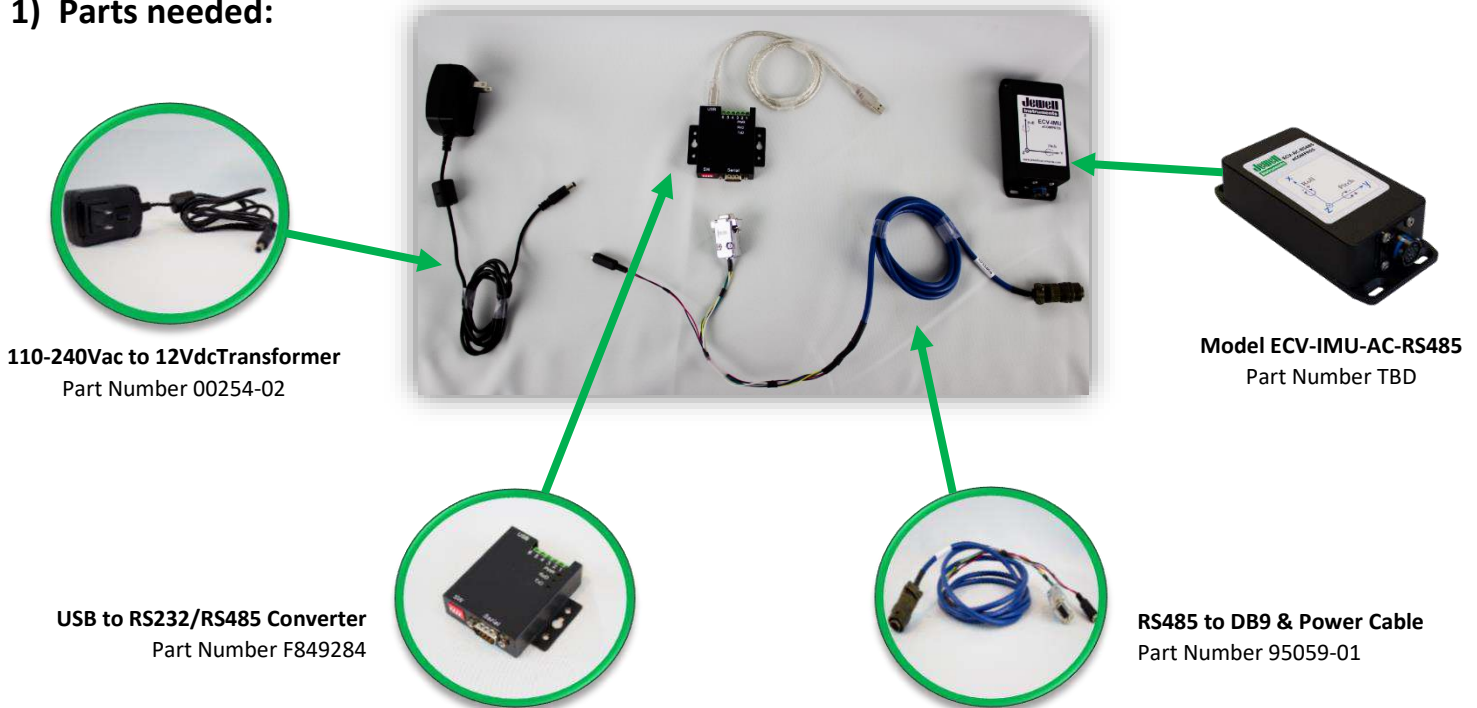


## ECV eCompass Series

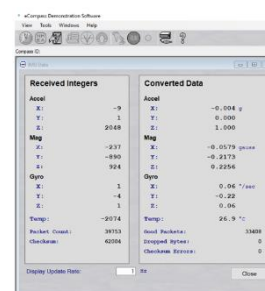
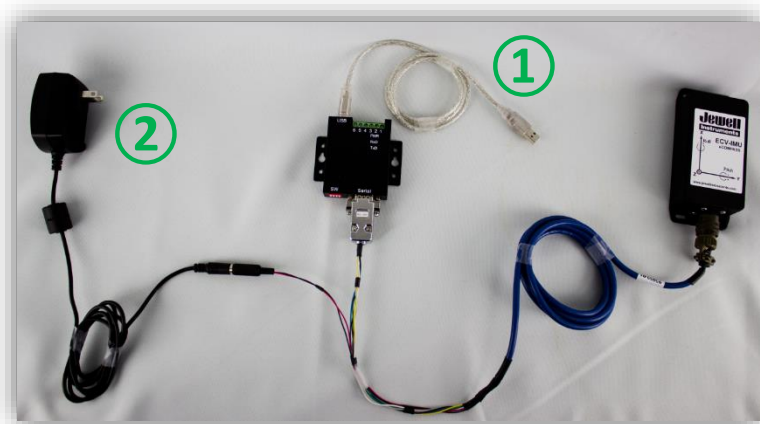
### Installation (Model ECV-IMU-AC-RS485):

#### 1) Parts needed:



#### 2) Installation procedure:

- ① Connect to the USB port on the computer
- ② Transformer: 110-240Vac to 12Vdc
- ③ Open software and set baud rate to **57600**



Upon completion, the 'IMU Data' window should appear on the screen as shown here  
Note: Max display update rate is 50Hz